

Team: WARREN EAST

NO.	NAME	TOTAL FG		3-POINT		FT	FTA	REB				PF	TP	A	TO	BLK	S	MIN
		FG	FGA	FG	FGA			O	D	T	T							
23	DUNN, COREY	6	10	0	0	4	5	2	2	4	4	15	1	0	0	0	24	
35	WHITNEY, JEFF	2	5	0	0	1	5	2	3	5	1	5	0	3	0	1	31	
51	JONES, MONTY	0	0	0	0	1	2	0	2	2	0	1	1	0	0	0	17	
21	COMPTON, BRIAN	3	4	0	0	4	4	0	1	1	3	10	2	2	0	1	21	
33	JOHNSON, GREG	3	8	0	0	5	8	1	4	5	3	11	0	4	0	0	29	
25	CRAIN, JAMES	3	5	0	0	0	0	2	3	5	1	5	0	0	0	1	17	
35	SMITH, JONATHAN	2	4	0	0	4	5	0	0	0	2	8	0	3	0	3	10	
11	SORRELL, ERVIN	0	2	0	0	1	2	0	1	1	0	1	0	0	0	0	7	
43	WARDLOW, TYRONE	0	0	0	0	0	0	0	0	0	0	0	0	0	0	0	1	
15	BRITT, DARRELL	0	0	0	0	0	0	0	0	0	0	0	0	0	0	0	1	
45	CRUMP, KEITH	0	0	0	0	0	0	0	0	0	0	0	0	0	0	0	1	
41	HILL, SHANNON	0	0	0	0	0	0	0	0	0	0	0	0	0	0	0	1	
TEAM								1	1	1	14	55	4	12	0	6	160	
TOTALS		19	38	0	0	20	31	8	16	24	14	55	4	12	0	6	160	
Percentages:		Game-----		FG	19/ 38	50.0%	3-PT.	0/ 0	0.0%	FT	20/ 31	64.5%						
		Period 1	7/ 12	58.3%	0/ 0	0.0%	0/ 0	0.0%	0/ 0	0.0%	2/ 4	50.0%						
		Period 2	5/ 8	62.5%	0/ 0	0.0%	0/ 0	0.0%	0/ 0	0.0%	10/ 11	90.9%						
		Period 3	4/ 12	33.3%	0/ 0	0.0%	0/ 0	0.0%	0/ 0	0.0%	8/ 16	50.0%						
		Period 4	3/ 6	50.0%	0/ 0	0.0%	0/ 0	0.0%	0/ 0	0.0%								

Team: OLDHAM COUNTY

NO.	NAME	TOTAL FG		3-POINT		FT	FTA	REB				PF	TP	A	TO	BLK	S	MIN
		FG	FGA	FG	FGA			O	D	T	T							
20	GREGORY, BRAD	2	5	0	1	0	0	2	3	5	2	4	2	2	0	1	26	
40	HARTLAGE, JOHN	7	15	0	2	1	2	2	9	11	3	15	1	3	1	0	31	
50	REXROAT, MARK	7	9	0	0	0	1	1	2	3	3	14	0	3	1	0	23	
14	HALLMAN, MIKE	1	4	0	2	0	0	0	1	1	3	2	2	3	0	0	22	
22	DAK, DOUG	2	2	0	0	0	0	1	0	1	5	4	0	2	0	0	22	
42	NUERMBERGER, E.	2	5	0	0	0	0	1	1	2	2	4	0	3	0	0	8	
10	DAMPIER, NICK	0	2	0	2	0	1	0	0	0	1	0	0	2	0	0	12	
24	JACKSON, PAUL	2	5	0	2	2	2	1	2	3	4	5	0	2	0	0	12	
34	JORGENSEN, JIM	0	0	0	0	0	0	0	1	1	0	0	0	0	0	0	1	
12	CRANFILL, SHANE	0	0	0	0	0	0	0	0	0	0	0	0	0	0	0	1	
54	HODGE, KENNY	0	0	0	0	0	0	0	0	0	0	0	0	0	0	0	1	
32	MCDONALD, SCOTT	0	0	0	0	0	0	0	0	0	0	0	0	0	0	0	1	
TEAM								2	1	3	23	49	5	20	2	1	160	
TOTALS		23	47	0	9	5	6	10	20	30	23	49	5	20	2	1	160	
Percentages:		Game-----		FG	23/ 47	48.9%	3-PT.	0/ 9	0.0%	FT	3/ 6	50.0%						
		Period 1	4/ 7	57.1%	0/ 0	0.0%	0/ 0	0.0%	0/ 0	0.0%	0/ 0	0.0%						
		Period 2	4/ 8	50.0%	0/ 1	0.0%	0/ 1	0.0%	2/ 4	50.0%	2/ 4	50.0%						
		Period 3	5/ 11	54.5%	0/ 1	0.0%	0/ 1	0.0%	0/ 0	0.0%	0/ 0	0.0%						
		Period 4	9/ 21	42.9%	0/ 7	0.0%	0/ 7	0.0%	1/ 2	50.0%	1/ 2	50.0%						

OFFICIALS: Marvin Moore, Dennis Jackson
 Technicals: None

SCORE BY PERIODS

WARREN EAST	14	12	18	14	= 58
OLDHAM COUNTY	8	10	12	19	= 49

Player	Team	OLDHAM COUNTY	Time	Score	WARREN EAST	Player	Team
GREGORY, BRAD, HARTLAGE, JOHN, REXROAT, MARK, HALLMAN, MIKE, OAK, DOUG					DUNN, COREY, COMPTON, BRIAN, JOHNSON, GREG, WHITNEY, JEFF, CRAIN, JAMES Ball to RAIDERS		
2	9	Foul on REXROAT, MARK	4 7:51				
			4 7:51		WHITNEY, JEFF, 2 Free Throws missed both	1-4	25.0% 12-17 70.5%
			4 7:56		Foul on DUNN, COREY	4	5
			4 7:36		Sub In: SMITH, JONATHAN Out: DUNN, COREY		
1-1	100%	3-5 50.0%	4 6:05	33-48*			
1-2	50.0%	3-6 50.0%	4 7:35				
		HARTLAGE, JOHN, 1 & Bonus made both	4 7:19	31-46*	4 ft Lane Driving by JOHNSON, GREG	3-7	42.8% 17-33 51.5%
		HARTLAGE, JOHN, 1 & Bonus missed 1st	4 6:26	31-46*	14 ft Left Side Jump shot by SMITH, JONATHAN Assist by COMPTON, BRIAN	2-4	50.0% 18-34 52.9%
6-11	54.5%	15-28 53.5%	4 6:13	*33-48		2	3
		3 ft Lane Bank by HARTLAGE, JOHN					
		REB: 18 A: 4 BLK: 1 TO: 18 PF: 9	4 6:13		REB: 16 A: 3 BLK: 0 TO: 7 PF: 5		
		S: 0 FT: 3-6 50.0% FG: 15-28 53.5%	No. 2 OLDHAM COUNTY	T I M E - O U T	S: 5 FT: 12-17 70.5% FG: 18-34 52.9%		
2-2	100%	15-29 55.1%	4 5:55	*35-48			
4		10	4 5:47				
		8 ft Left Base Line Jump shot by OAK, DOUG	4 5:47	35-50*	COMPTON, BRIAN, 1 & Bonus made both	4-4	100% 14-19 73.6%
		Foul on OAK, DOUG	4 5:39				
		Sub In: NUERMBERGER, E. Out: REXROAT, MARK	4 5:39		Sub In: SORRELL, ERVIN Out: COMPTON, BRIAN		
			4 5:39				
		Sub In: DAMPIER, NICK Out: OAK, DOUG	4 5:33				
		Foul on HALLMAN, MIKE	4 4:33	*37-50	SMITH, JONATHAN, 1 & Bonus missed 1st	4-5	80.0% 14-20 70.0%
2-5	46.0%	17-32 53.1%	4 4:22		Foul on JOHNSON, GREG	2	6
		4 ft Lane Follow by NUERMBERGER, E.	4 4:22				
		Sub In: OAK, DOUG Out: HALLMAN, MIKE	4 4:12		Sub In: JONES, MONTY Out: CRAIN, JAMES		
			4 4:08				
		Foul on NUERMBERGER, E.	4 4:08	37-52*	JOHNSON, GREG, 1 & Bonus made both	2-2	100% 16-22 72.7%
		Sub In: REXROAT, MARK Out: NUERMBERGER, E.	4 4:08				
		Sub In: JACKSON, PAUL Out: DAMPIER, NICK	4 3:45	*39-52			
7-12	58.3%	18-35 51.4%	4 3:20				
5		13	4 3:20		Sub In: COMPTON, BRIAN Out: SMITH, JONATHAN		
		8 ft Right Base Line Jump shot by HARTLAGE, JOHN	4 3:20				
		Foul on OAK, DOUG	4 3:07	*41-52	WHITNEY, JEFF, 1 & Bonus missed 1st	1-5	20.0% 16-23 69.5%
		Sub In: HALLMAN, MIKE Out: OAK, DOUG	4 2:33				
5-7	71.4%	19-38 50.0%	4 2:33		Sub In: CRAIN, JAMES Out: SORRELL, ERVIN		
1		14	4 2:33		JOHNSON, GREG, 1 & Bonus missed 1st	2-3	66.6% 16-24 66.6%
		9 ft Lane Turnaround by REXROAT, MARK	4 2:24	*43-52			
6-8	75.0%	20-40 50.0%	4 2:01	*45-52			
7-9	77.7%	21-41 51.2%	4 1:30	45-54*	Layup Off Fast Break by CRAIN, JAMES Assist by JONES, MONTY	3-5	60.0% 19-38 50.0%
		3 ft Lane Turnaround by REXROAT, MARK				1	4
		Assist by HALLMAN, MIKE					
1-3	33.3%	22-42 52.3%	4 1:21	*47-54		3	7
		14 ft Right Side Jump shot by HALLMAN, MIKE	4 1:14		Foul on JOHNSON, GREG		
			4 1:14		Sub In: DUNN, COREY Out: JONES, MONTY		
		Foul on HARTLAGE, JOHN	4 1:03				
3		15	4 1:03		Sub In: JONES, MONTY Out: CRAIN, JAMES		
			4 1:03		JOHNSON, GREG, 1 & Bonus missed 1st	2-4	50.0% 16-25 64.0%
		Foul on JACKSON, PAUL	4 0:30				
4		16					
		REB: 28 A: 5 BLK: 2 TO: 20 PF: 16	4 0:30		REB: 22 A: 4 BLK: 0 TO: 12 PF: 7		
		S: 1 FT: 3-6 50.0% FG: 22-44 50.0%	No. 3 OLDHAM COUNTY	T I M E - O U T	S: 6 FT: 16-25 64.0% FG: 19-38 50.0%		
		Foul on REXROAT, MARK	4 0:30	47-55*	JOHNSON, GREG, 1 & Bonus made 1st missed 2nd	3-6	50.0% 17-27 62.9%
3		17	4 0:18				
		Foul on GREGORY, BRAD	4 0:18	47-57*	JOHNSON, GREG, 1 & Bonus made both	5-8	62.5% 19-29 65.5%
2		18	4 0:11				
			4 0:11		Subs In: WARDLOW, TYRONE, BRITT, DARRELL, CRUMP, KEITH, HILL, SHANNON		
		Subs In: JORGENSEN, JIM, CRANFILL, SHANE, HODGE, KENNY,			Out: COMPTON, BRIAN, DUNN, COREY, JOHNSON, GREG, WHITNEY, JEFF		
		MCDONALD, SCOTT					
		Out: HALLMAN, MIKE, GREGORY, BRAD, HARTLAGE, JOHN, REXROAT, MARK					
2-5	40.0%	23-47 48.9%	4 0:11	47-58*	JONES, MONTY, 1 & Bonus made 1st missed 2nd	1-2	50.0% 20-31 64.5%
		10 ft Left Base Line Turnaround by JACKSON, PAUL	4 0:04	*49-58			

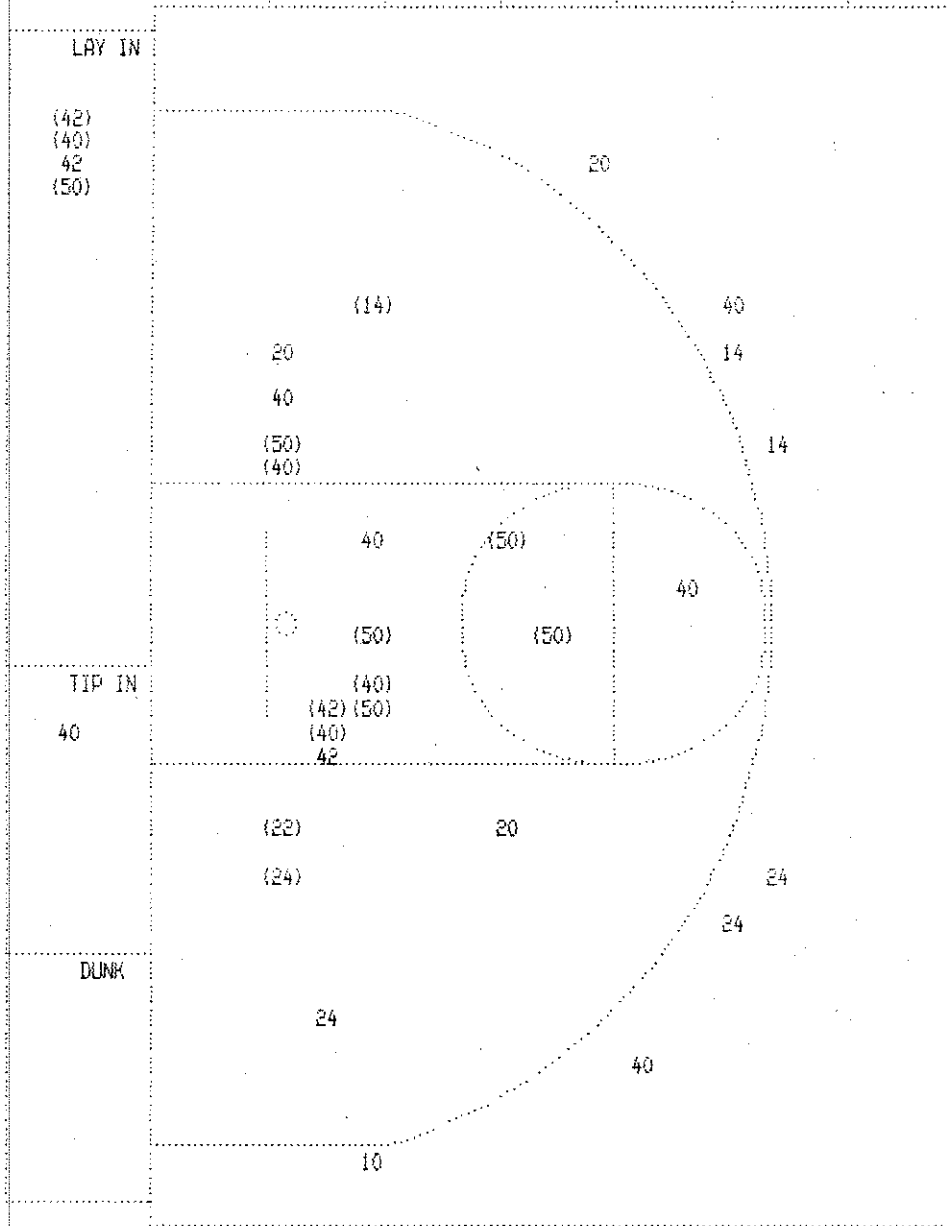
WARREN EAST "RAIDERS" vs OLDHAM COUNTY "COLONELS"
2nd Half Play by Play

PAGE : 1

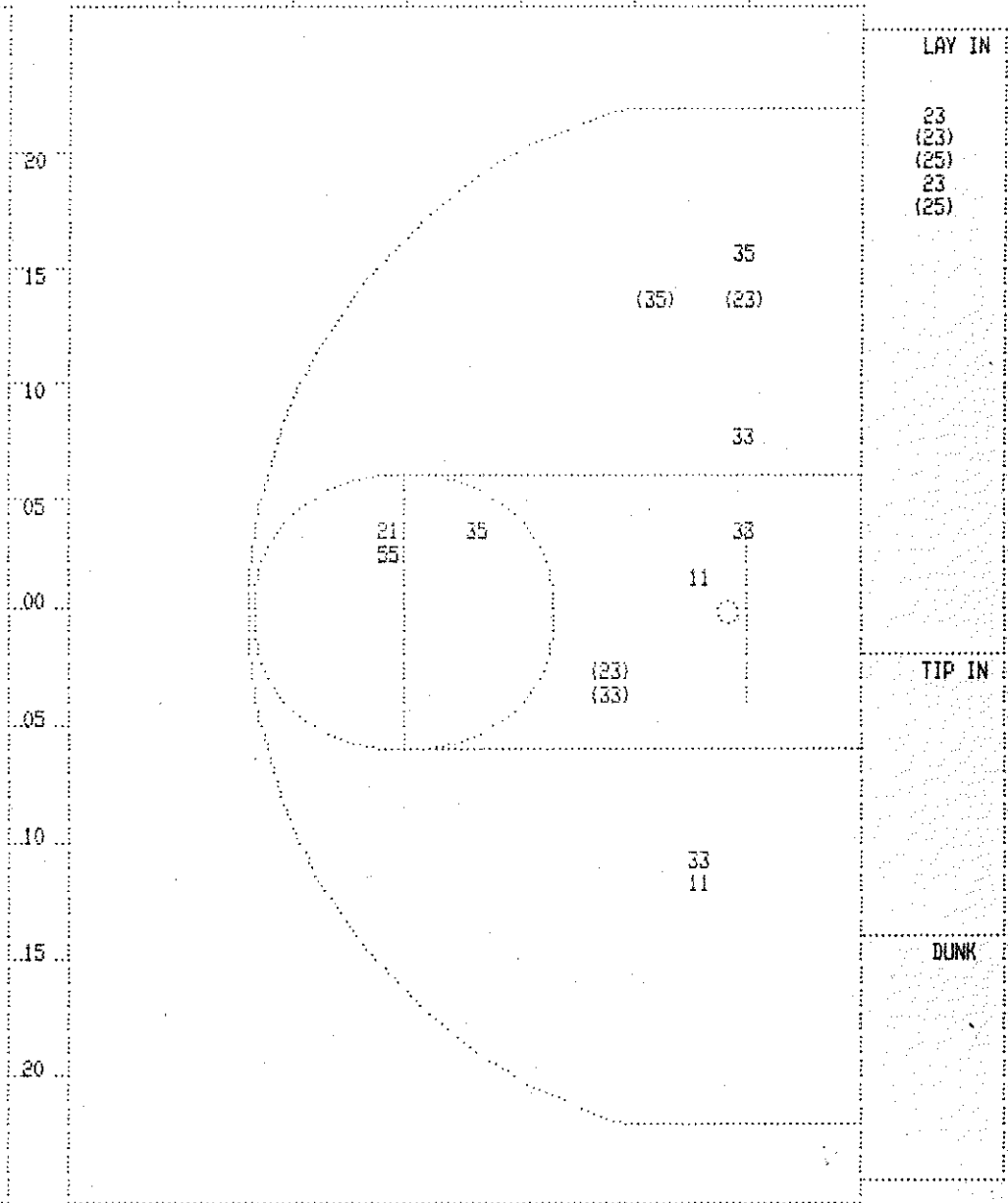
Tip off at 9:25 p.m. on 03/16/88 at State Tourney, Louisville
Produced by the K.H.S.A.A. Stat Crew with FINAL III™

Player	Team	OLDHAM COUNTY	Time	Score	WARREN EAST	Player	Team
GREGORY, BRAD, HALLMAN, MIKE, OAK, DOUG, HARTLAGE, JOHN, REXROAT, MARK Ball to COLONELS					WHITNEY, JEFF, JONES, MONTY, JOHNSON, GREG, DUNN, COREY, COMPTON, BRIAN		
4-6	66.6%	9-16 56.2%	4 ft Lane Jump shot by HARTLAGE, JOHN	3 7:46	Foul on DUNN, COREY	2	1
			Sub In: DAMPIER, NICK Out: HALLMAN, MIKE	3 7:46 *20-25			
2-4	50.0%	10-18 55.5%	2 ft Lane Turnaround by REXROAT, MARK	3 7:38 20-28*	4 ft Lane Bank by DUNN, COREY	4-6	66.6% 13-21 61.9%
3-5	60.0%	11-19 57.8%	8 ft Right Base Line Turnaround by REXROAT, MARK	3 6:56 20-30*	14 ft Left Base Line Jump shot by DUNN, COREY	5-7	71.4% 14-22 63.6%
			Assist by GREGORY, BRAD	3 6:36			
1	2		Foul on OAK, DOUG	3 6:36 *22-30			
2	1		Foul on REXROAT, MARK	3 5:58 *24-30			
			Sub In: JACKSON, PAUL Out: HARTLAGE, JOHN	3 5:38			
1	2		Foul on JACKSON, PAUL	3 4:47 24-32*	Driving Reverse Lay Up by DUNN, COREY	6-9	66.6% 15-26 57.6%
			Sub In: JACKSON, PAUL Out: HARTLAGE, JOHN	3 4:47			
			Foul on JACKSON, PAUL	3 4:47	Sub In: CRAIN, JAMES Out: JONES, MONTY		
1	3		Foul on JACKSON, PAUL	3 4:47 24-33*	DUNN, COREY, 1 Free Throw made	1-1	100% 3-5 60.0%
				3 4:02			
				3 4:02	Sub In: SMITH, JONATHAN Out: COMPTON, BRIAN		
				3 4:02 24-35*	Driving Flip by CRAIN, JAMES	2-4	50.0% 16-28 57.1%
			REB: 11 A: 2 BLK: 1 TO: 11 PF: 3	3 3:38	REB: 13 A: 2 BLK: 0 TO: 6 PF: 1		
			S: 0 FT: 2-4 50.0% FG: 11-21 52.3%	No. 1 OLDHAM COUNTY TIME - O U T	S: 2 FT: 3-5 60.0% FG: 16-28 57.1%		
			Sub In: HALLMAN, MIKE Out: DAMPIER, NICK	3 3:38			
			Sub In: HARTLAGE, JOHN Out: OAK, DOUG	3 3:38			
2	4		Foul on HALLMAN, MIKE	3 3:05 24-36*	DUNN, COREY, 2 Free Throws made 1st missed 2nd	2-3	66.6% 4-7 57.1%
				3 3:03	Foul on CRAIN, JAMES	1	2
4-6	66.6%	12-22 54.5%	10 ft Lane Turnaround by REXROAT, MARK	3 2:25 *26-36			
1	3		Assist by HARTLAGE, JOHN				
			Sub In: NUERMBERGER, E. Out: REXROAT, MARK	3 2:03	Foul on SMITH, JONATHAN	2	3
2	5		Foul on JACKSON, PAUL	3 2:03			
				3 1:56 26-38*	SMITH, JONATHAN, 1 & Bonus made both	2-2	100% 6-9 66.6%
3	6		Foul on JACKSON, PAUL	3 1:46	Sub In: COMPTON, BRIAN Out: JOHNSON, GREG		
				3 1:46 26-40*	SMITH, JONATHAN, 1 & Bonus made both	4-4	100% 8-11 72.7%
			Sub In: OAK, DOUG Out: JACKSON, PAUL	3 1:46			
1-2	50.0%	13-23 56.5%	Driving Layup by NUERMBERGER, E.	3 0:56 *28-40			
2	7		Foul on HARTLAGE, JOHN	3 0:37			
				3 0:37 28-42*	DUNN, COREY, 2 Free Throws made both	4-5	80.0% 10-13 76.9%
				3 0:18	Foul on DUNN, COREY	3	4
5-8	62.5%	14-24 58.3%	Turnaround Layup by HARTLAGE, JOHN	3 0:16 *30-42			
2	4		Assist by GREGORY, BRAD				
3	8		Foul on OAK, DOUG	3 0:09	Sub In: SORRELL, ERVIN Out: DUNN, COREY		
				3 0:09 30-44*	COMPTON, BRIAN, 1 & Bonus made both	2-2	100% 12-15 80.0%

SECOND HALF SHOT CHART Produced by the K.H.S.A.A. Stat Crew with FINAL III™



Player	Player	Player
20 - GREGORY, B 0/3 0.0%	10 - DAMPIER, N 0/1 0.0%	
40 - HARTLAGE, 4/10 40.0%	24 - JACKSON, P 1/4 25.0%	
50 - REXROAT, M 5/5 100.0%	42 - NUERNBERGE 2/4 50.0%	
14 - HALLMAN, M 1/3 33.3%		
22 - OAK, DDOG 1/1 100.0%		
Layups 1-9 Ft 10-15 Ft Over 15 Ft 3 Pointers Total		
3 / 5 9 / 11 3 / 6 0 / 2 0 / 8 15 / 32		
60.0% 81.8% 50.0% 0.0% 0.0% 46.9%		



Player	Player	Player
23 - DUNN, CORE 3/5 60.0%	25 - DRAIN, JAM 2/2 100.0%	
55 - WHITNEY, J 0/1 0.0%	35 - SMITH, JON 1/3 33.3%	
21 - COMPTON, B 0/1 0.0%		
33 - JOHNSON, G 1/4 25.0%		
11 - SORRELL, E 0/2 0.0%		
Layups 1-9 Ft 10-15 Ft Over 15 Ft 3 Pointers Total		
3 / 5 2 / 5 2 / 7 0 / 1 7 / 18		
60.0% 40.0% 28.6% 0.0% 38.9%		

BOX SCORE: *** ~~WARREN~~ ^{HALF} ***

Date: 03-16-88 Site: State Tourney, Louisville Attendance:

NO.	NAME	TOTAL FG		3-POINT		FT	FTA	REB			PF	TP	A	TO	BLK	S	MIN
		FG	FGA	FG	FGA			O	D	T							
23	DUNN, COREY	3	5	0	0	0	0	0	1	1	1	6	1	0	0	0	15
55	WHITNEY, JEFF	2	4	0	0	1	2	2	1	3	1	5	0	2	0	1	16
51	JONES, MONTY	0	0	0	0	0	0	0	1	1	0	0	0	0	0	0	10
21	COMPTON, BRIAN	3	3	0	0	0	0	0	0	0	3	6	1	2	0	1	10
33	JOHNSON, GREG	2	4	0	0	0	0	1	1	2	1	4	0	1	0	0	15
25	CRAIN, JAMES	1	3	0	0	0	0	2	2	4	0	2	0	0	0	0	8
35	SMITH, JONATHAN	1	1	0	0	0	0	0	0	0	1	2	0	1	0	0	2
11	SORRELL, ERVIN	0	0	0	0	1	2	0	0	0	0	1	0	0	0	0	4
TEAM																	
TOTALS		12	20	0	0	2	4	5	6	11	7	26	2	6	0	2	80
Percentages:		Game	-----	FG		12/ 20	60.0%	3-PT.		0/ 0	0.0%	FT		2/ 4	50.0%		
		Period	1			7/ 12	58.3%			0/ 0	0.0%			0/ 0	0.0%		
		Period	2			5/ 8	62.5%			0/ 0	0.0%			2/ 4	50.0%		

NO.	NAME	TOTAL FG		3-POINT		FT	FTA	REB			PF	TP	A	TO	BLK	S	MIN
		FG	FGA	FG	FGA			O	D	T							
20	GREGORY, BRAD	2	2	0	0	0	0	1	0	1	0	4	0	0	0	0	11
40	HARTLAGE, JOHN	3	5	0	0	0	0	0	1	1	1	6	0	2	1	0	16
50	REXROAT, MARK	1	3	0	0	0	1	0	0	0	0	2	0	1	0	0	12
14	HALLMAN, MIKE	0	1	0	0	0	0	0	1	1	1	0	1	2	0	0	11
22	DAK, DOUG	1	1	0	0	0	0	0	0	0	1	2	0	1	0	0	14
42	NUERMBERGER, E.	0	1	0	0	0	0	0	1	1	1	0	0	1	0	0	4
10	DAMPIER, NICK	0	1	0	1	0	1	0	0	0	1	0	0	2	0	0	7
24	JACKSON, PAUL	1	1	0	0	2	2	1	0	1	0	4	0	0	0	0	5
TEAM																	
TOTALS		8	15	0	1	2	4	3	4	7	5	18	1	9	1	0	80
Percentages:		Game	-----	FG		8/ 15	53.3%	3-PT.		0/ 1	0.0%	FT		2/ 4	50.0%		
		Period	1			4/ 7	57.1%			0/ 0	0.0%			0/ 0	0.0%		
		Period	2			4/ 8	50.0%			0/ 1	0.0%			2/ 4	50.0%		

OFFICIALS: Marvin Moore, Dennis Jackson
 Technicals: None

SCORE BY PERIODS		
WARREN EAST	14	12 = 26
OLDHAM COUNTY	8	10 = 18

Produced by the K.H.S.A.A. Stat Crew with FINAL III™

WARREN EAST "RAIDERS" vs OLDHAM COUNTY "COLONELS"
1st Half Play by Play

PAGE : 1

Tip off at 9:25 p.m. on 03/16/88 at State Tourney, Louisville
Produced by the K.H.S.A.A. Stat Crew with FINAL III™

Player	Team	OLDHAM COUNTY	Time	Score	WARREN EAST	Player	Team
GREGORY, BRAD, HARTLAGE, JOHN, REXROAT, MARK, HALLMAN, MIKE, OAK, DOUG Ball to COLONELS			DUNN, COREY, WHITNEY, JEFF, JONES, MONTY, COMPTON, BRIAN, JOHNSON, GREG				
1-1	100%	1-1 100%	1 7:47	*2-0			
		10 ft Lane Jump shot by GREGORY, BRAD	1 7:02	2-2*	10 ft Lane Jump shot by COMPTON, BRIAN	1-1	100% 1-2 50.0%
			1 6:11		Foul on COMPTON, BRIAN	1	1
			1 5:57	2-4*	Layup Off Fast Break by COMPTON, BRIAN	2-2	100% 2-3 66.6%
			1 5:40	2-6*	10 ft Left Side Jump shot by DUNN, COREY	1-2	50.0% 3-4 75.0%
			1 5:09		Player Control Foul on JOHNSON, GREG	1	2
			1 5:09		Sub In: CRAIN, JAMES Out: JONES, MONTY		
			1 4:45	2-8*	16 ft Right Side Jump shot by COMPTON, BRIAN	3-3	100% 4-5 80.0%
1-1	100%	2-3 66.6%	1 4:26	*4-8			
		18 ft Circle Jump shot by HARTLAGE, JOHN	1 4:08	4-10*	Follow Layup by JOHNSON, GREG	1-2	50.0% 5-7 71.4%
			1 4:02		Sub In: SMITH, JONATHAN Out: COMPTON, BRIAN		
		Sub In: NUERMBERGER, E. Out: REXROAT, MARK	1 4:02				
		Foul on HALLMAN, MIKE	1 3:30				
2-2	100%	3-5 60.0%	1 3:03	*6-10			
		6 ft Lane Jump shot by GREGORY, BRAD	1 2:34	6-12*	17 ft Left Angle Jump shot by SMITH, JONATHAN	1-1	100% 6-11 54.5%
			1 2:19		Foul on SMITH, JONATHAN	1	3
			1 2:19		Sub In: JONES, MONTY Out: CRAIN, JAMES		
		Sub In: DAMPIER, NICK Out: OAK, DOUG	1 2:19				
		Player Control Foul on NUERMBERGER, E.	1 1:56				
			1 1:56		Sub In: COMPTON, BRIAN Out: SMITH, JONATHAN		
			1 1:47		Sub In: CRAIN, JAMES Out: JOHNSON, GREG		
			1 1:26	6-14*	Driving Layup by CRAIN, JAMES	1-3	33.3% 7-12 58.3%
					Assist by COMPTON, BRIAN	1	1
					Sub In: JOHNSON, GREG Out: DUNN, COREY		
2-3	66.6%	4-7 57.1%	1 1:03	*8-14			
		12 ft Right Base Line Jump shot by HARTLAGE, JOHN	1 0:07				

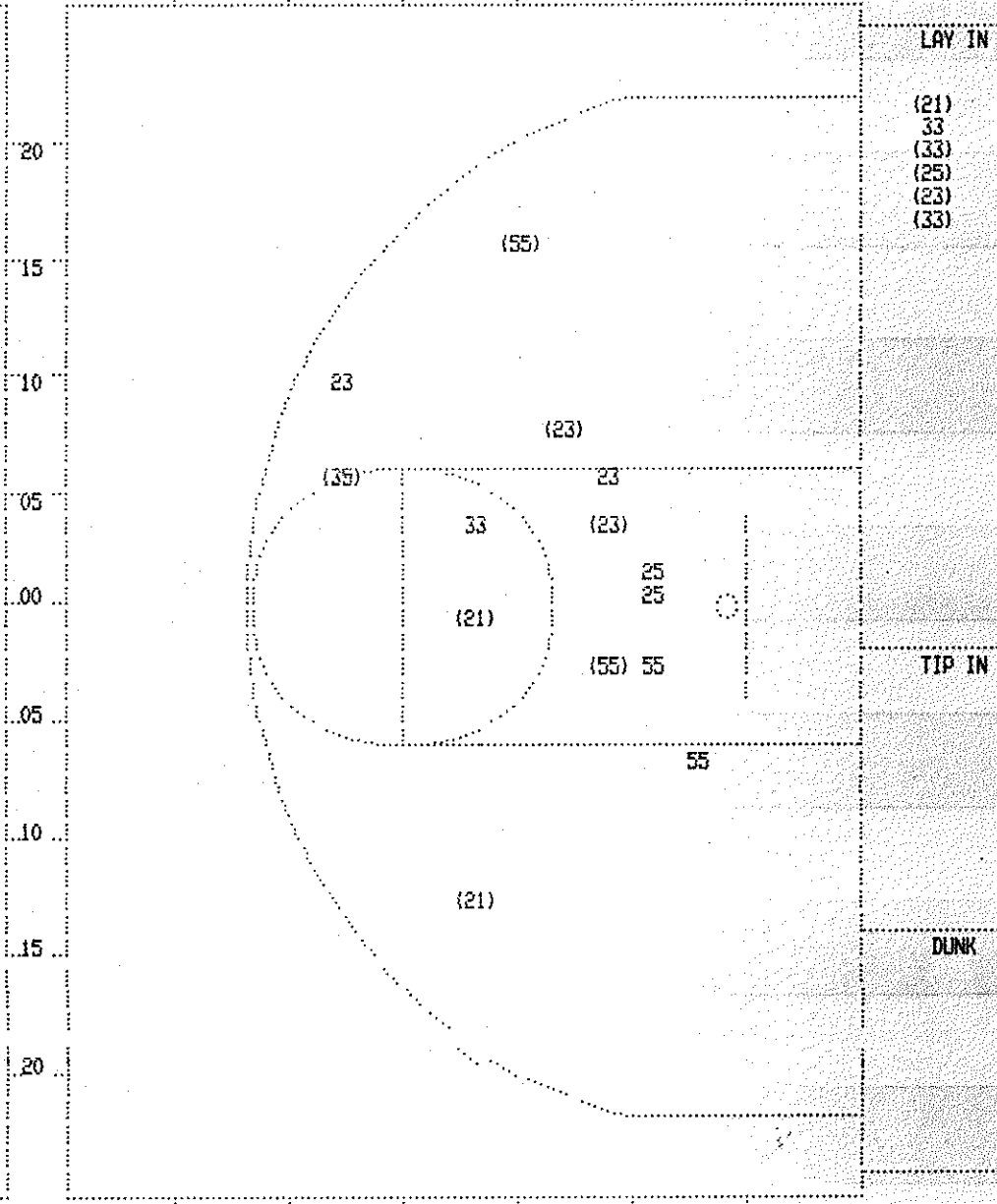
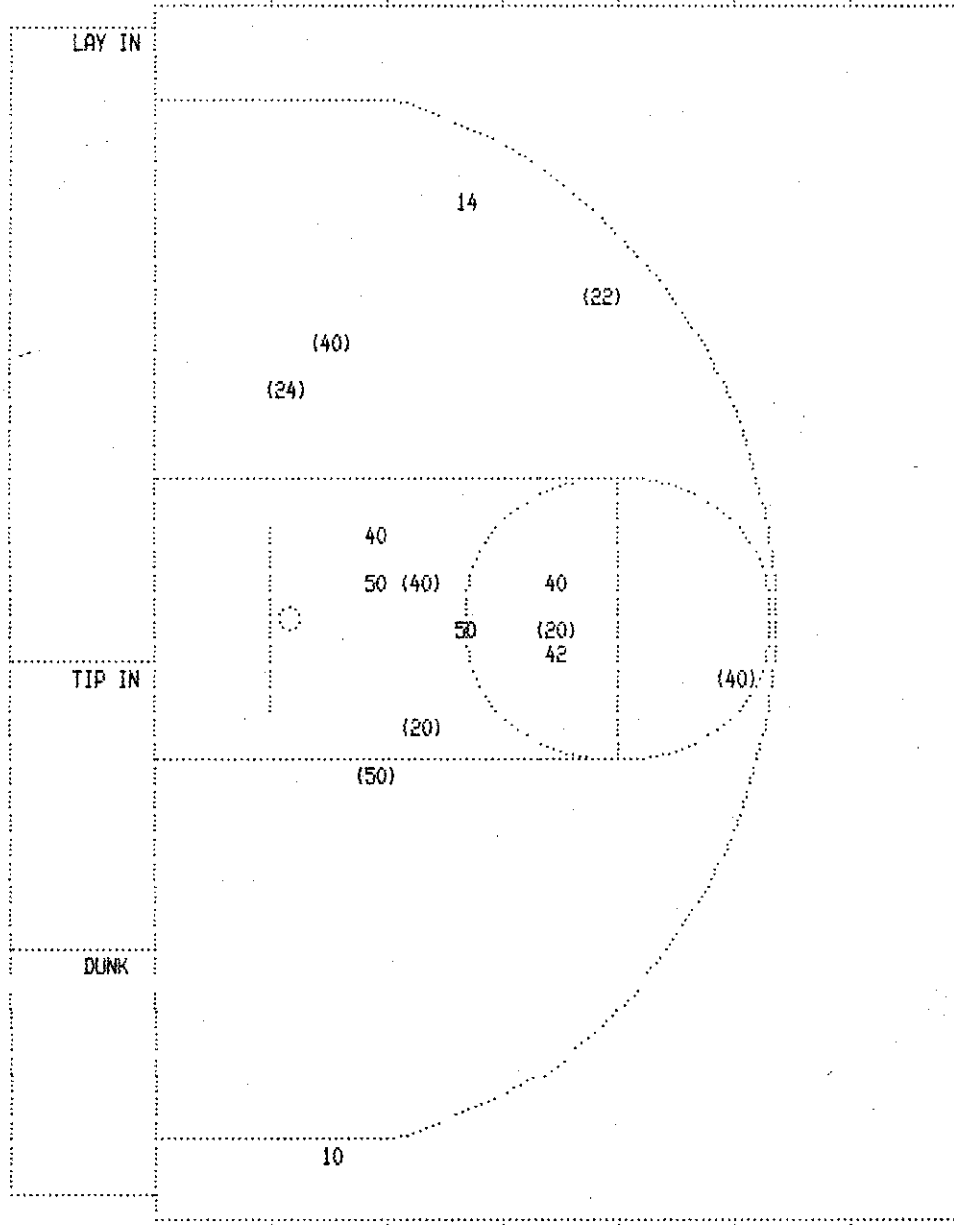
WARREN EAST "RAIDERS" vs OLDHAM COUNTY "COLONELS"
1st Half Play by Play

PAGE : 2

Tip off at 9:25 p.m. on 03/16/88 at State Tourney, Louisville
Produced by the K.H.S.A.A. Stat Crew with FINAL III™

Player	Team	OLDHAM COUNTY	Time	Score	WARREN EAST	Player	Team
GREGORY, BRAD, HARTLAGE, JOHN, REXROAT, MARK, HALLMAN, MIKE, OAK, DOUG			DUNN, COREY, WHITNEY, JEFF, JONES, MONTY, COMPTON, BRIAN, JOHNSON, GREG				
Ball to RAIDERS							
1-2	50.0%	5-8 62.5%	2 7:45	8-16*	6 ft Lane Jump shot by DUNN, COREY	2-3	66.6% 8-13 61.5%
		6 ft Left Side Turnaround by REXROAT, MARK	2 7:21	*10-16		2	4
			2 7:21		Foul on COMPTON, BRIAN		
0-1	00.0%	0-1 00.0%	2 7:21				
		REXROAT, MARK, 1 Free Throw missed	2 7:12	10-18*	18 ft Left Side Jump shot by WHITNEY, JEFF	1-1	100% 9-14 64.2%
					Assist by DUNN, COREY	1	2
3-4	75.0%	6-10 60.0%	2 6:48	*12-18			
1-1	100%	7-11 63.6%	2 6:23	*14-18			
		4 ft Lane Turnaround by HARTLAGE, JOHN					
		18 ft Right Side Jump shot by OAK, DOUG					
		Assist by HALLMAN, MIKE					
		Foul on OAK, DOUG	2 5:45				
		Foul on HARTLAGE, JOHN	2 5:10				
		Sub In: DAMPIER, NICK Out: HALLMAN, MIKE	2 4:51	14-19*	WHITNEY, JEFF, 2 Free Throws missed 1st made 2nd	1-2	50.0% 1-2 50.0%
		Sub In: JACKSON, PAUL Out: GREGORY, BRAD	2 4:51				
			2 4:51				
			2 4:20		Player Control Foul on COMPTON, BRIAN	3	5
			2 4:20		Sub In: SORRELL, ERVIN Out: COMPTON, BRIAN		
			2 3:51		Foul on DUNN, COREY	1	6
0-1	00.0%	0-2 00.0%	2 3:51				
		DAMPIER, NICK, 1 & Bonus missed 1st	2 3:24				
		Foul on DAMPIER, NICK	2 3:24	14-20*	SORRELL, ERVIN, 1 & Bonus made 1st missed 2nd	1-2	50.0% 2-4 50.0%
1-1	100%	8-14 57.1%	2 3:10	*16-20			
		10 ft Right Base Line Jump shot by JACKSON, PAUL	2 3:04		Sub In: CRAIN, JAMES Out: JONES, MONTY		
			2 3:04	16-22*	4 ft Lane Turnaround by WHITNEY, JEFF	2-4	50.0% 10-18 55.5%
			2 1:44		Foul on WHITNEY, JEFF	1	7
2-2	100%	2-4 50.0%	2 1:44	*18-22			
		JACKSON, PAUL, 2 Free Throws made both	2 1:31	18-24*	Driving Layup by DUNN, COREY	3-5	60.0% 11-19 57.8%
			2 0:04	18-26*	Driving Scoop by JOHNSON, GREG	2-4	50.0% 12-20 60.0%

FIRST HALF SHOT CHART Produced by the K.H.S.A.A. Stat Crew with FINAL III™



OLDHAM COUNTY

Player	Player	Player
20 - GREGORY, B 2 / 2 100.0%	10 - DAMPIER, N 0 / 1 0.0%	
40 - HARTLAGE, 3 / 5 60.0%	24 - JACKSON, P 1 / 1 100.0%	
50 - REXROAT, M 1 / 3 33.3%	42 - NUERBERGE 0 / 1 0.0%	
14 - HALLMAN, M 0 / 1 0.0%		
22 - OAK, DOUG 1 / 1 100.0%		

Layups	1-9 Ft	10-15 Ft	Over 15 Ft	3 Pointers	Total
	3 / 6	3 / 5	2 / 3	0 / 1	8 / 15
	50.0%	60.0%	66.7%	0.0%	53.3%

WARREN EAST

Player	Player	Player
23 - DUNN, CORE 3 / 5 60.0%	35 - SMITH, JON 1 / 1 100.0%	
55 - WHITNEY, J 2 / 4 50.0%		
21 - COMPTON, B 3 / 3 100.0%		
33 - JOHNSON, G 2 / 4 50.0%		
25 - CRAIN, JAM 1 / 3 33.3%		

Layups	1-9 Ft	10-15 Ft	Over 15 Ft	3 Pointers	Total
	5 / 6	2 / 7	2 / 3	3 / 4	12 / 20
	83.3%	28.6%	66.7%	75.0%	60.0%